



Feel[✦] the sunrise



Saw the sun rise. A lovely apricot sky with flames in it and then solemn pink.
Heavens, how beautiful... feel so full of love today.

Yoga deck

Feel^{the moment}



Take a heavenly dip into the infinity edged pool with jacuzzi and discover a new meaning of freshness. Enjoy the water splashes while getting your body relaxed and senses revived.

A Personal Oasis

Feel^{serene}



The design language features exquisite contemporary styling, with a focus on quality and fine attention to detail. Residents are offered full height windows that admit an abundant essence of nature.

Sheer Elegance, Subtle yet overwhelming.

Feelⁱ
proud

A new era
in luxury living.
An elegant
retreat.

Manor Greenz is born out of intricate research for elite living preferences and aspirations. Right from the location and planning, every detail is taken care to give lifestyle a distinct sheen.

The main structure, though a single unit, is exquisitely architected to look and feel like three separate blocks, ensuring total privacy.


MANOR
GREENZ

LAVISH 4 BEDS & PENTHOUSES

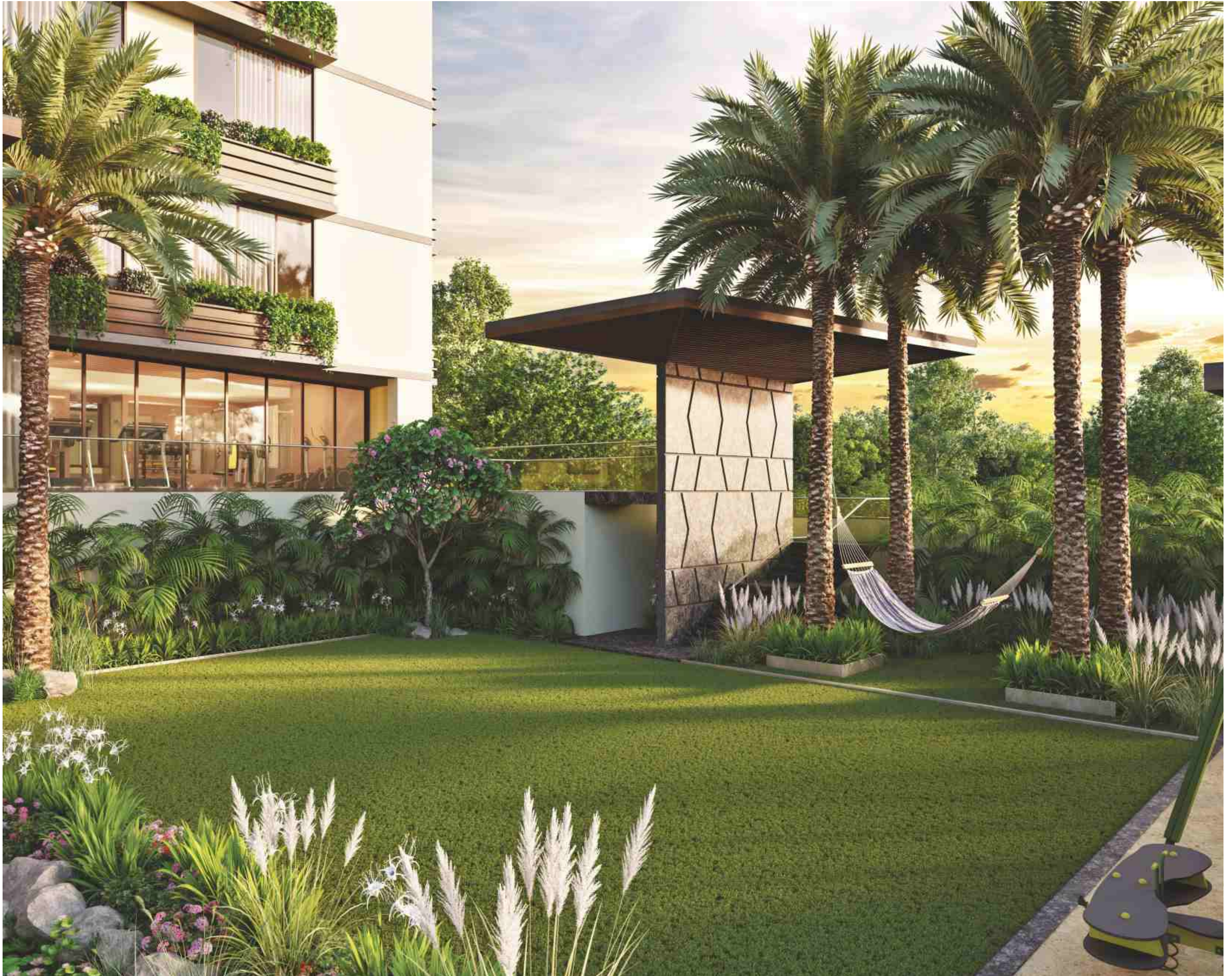




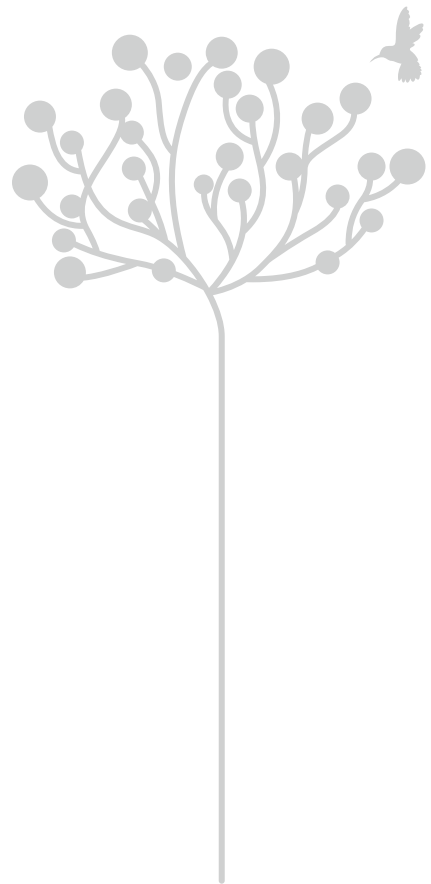
Live the
essence of nature
every morning.
Get the beauty
of freshness.

Capture the essence of life naturally in the
city center. Live fresh to the fullest at the
beautifully landscaped garden & sitout area.

First floor Indoor games, gym & home theatre connected to garden



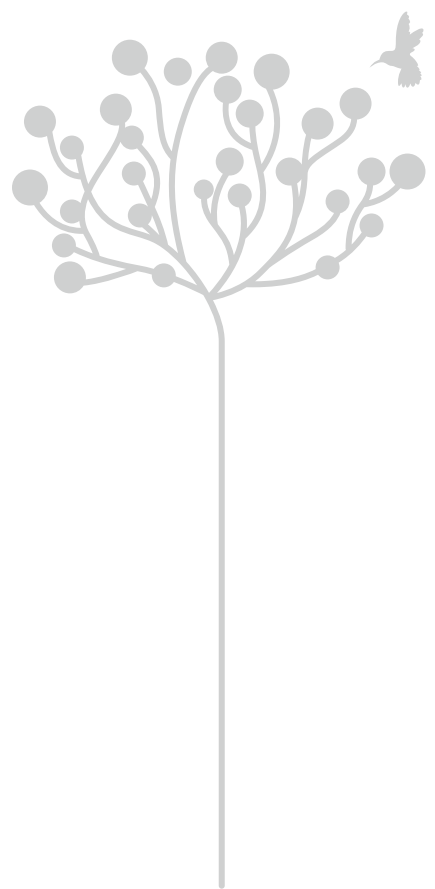
The seven star luxury at home in a prime location of repute is a rare find!
Winsome Realty is the one who will offer you this at Law Garden.





Prepare yourself to live a majestic life Prepare yourself for a LIFE to RULE.
The double heightened airconditioned entry lounge with ambient lighting and elegant Italian marble flooring greets you with grandeur.

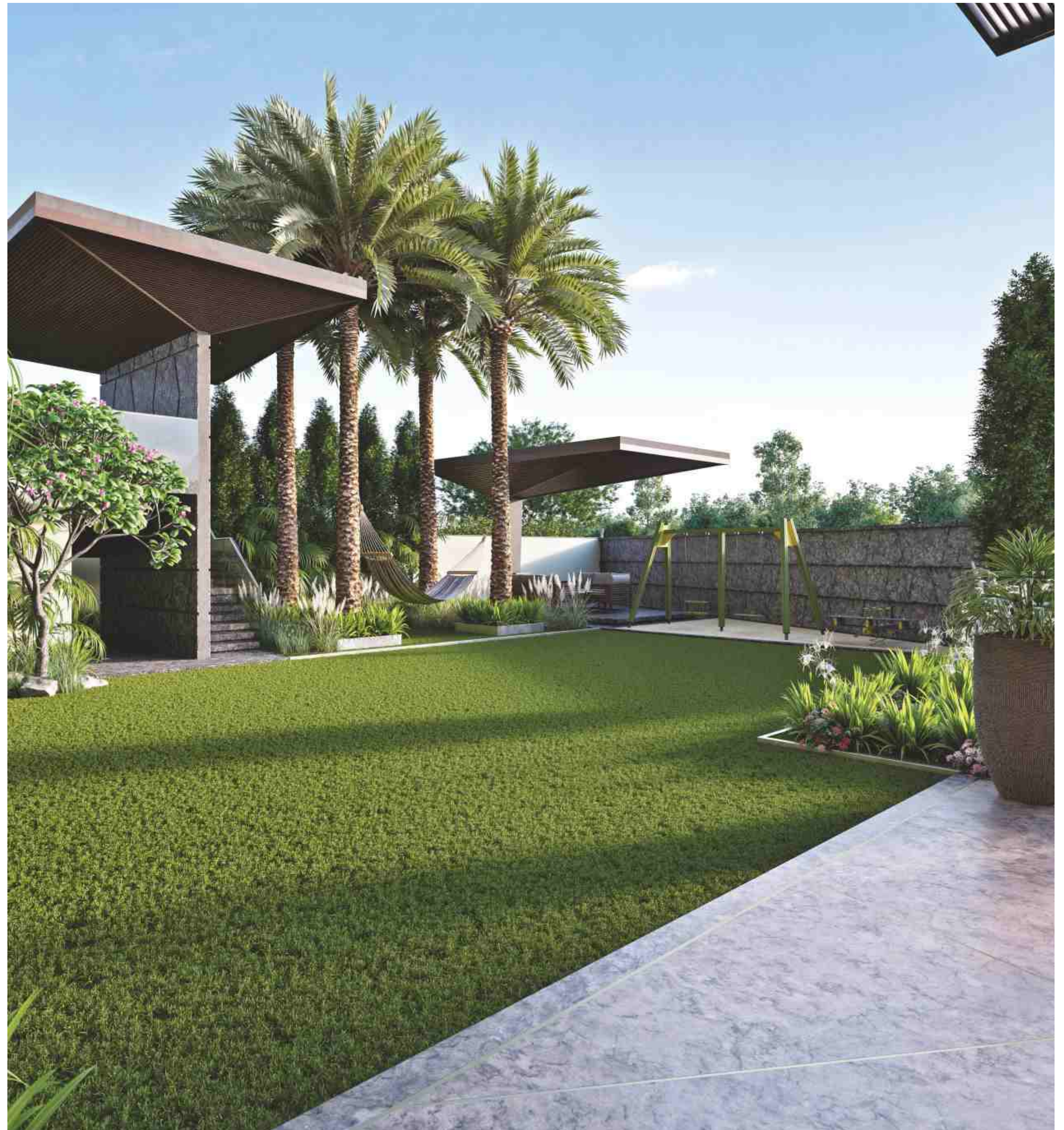
A legendary lifestyle





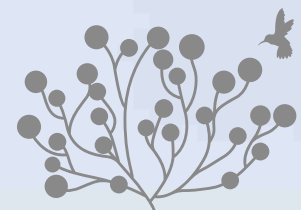
A sense of arrival

The entrance foyer, a lesson in discreet luxury to provide a mood of sheer calmness.



Living at Manor Greenz

It brings you into the heart of city.
An elysium in central Ahmedabad bundled with
bounty of natural habitat and easy connectivity across the city.



Elegantly Simple

The elevation palette with a subtle tone-on-tone of beige and pale grey makes an everlasting style statement which is uncluttered yet not minimalist.

Feel^{bird} Lavish

- 14th Floors + 15th Terrace for Common Amenities

- Wooden finish UPVC window

- Vegas gold Italian flooring

- 35 units with no common walls & 3 Duplex Pent Houses

- 24 Feet balcony with Pristine views in Type A units

- Infinity edge Pool with breathtaking city view

- Private balcony in master bed in Type B units

- Yoga Deck & Gazebos

- Sun Deck

- 3 Stretcher size 16 passenger elevators

- Uninterrupted views - no high - rises in vicinity

- Airconditioned units including kitchen

- First floor indoor games, home theatre and Gymnasium connected to garden

- 3 car park per unit

- 2 side road access

- Double height entrance lounge

- D.G. Power backup for common facility

- Water Softener

- Servant room with attached toilet

- Shower cubicles in master bed toilets

- Ultra modern modular kitchen





Everyone deserves a piece of sky

An aspirational design for views of unprecedented serenity bestowing peace in every breath for an experience that allows you to feel the seamless sky from your cozy homes.





Ground Floor
(Layout)



Terrace Floor
(Layout)

Infinity Jacuzzi Splash Pool & Yoga Deck

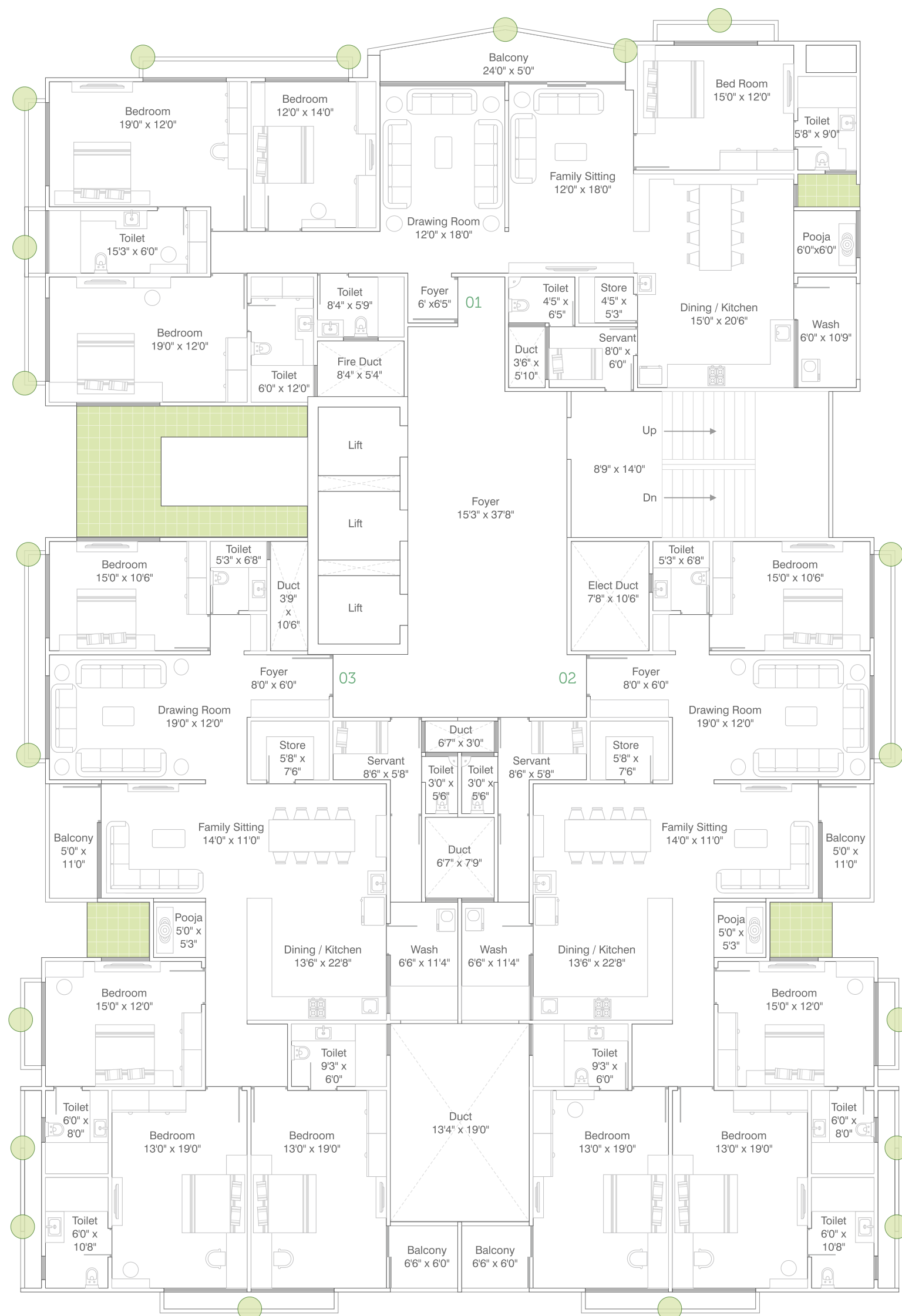


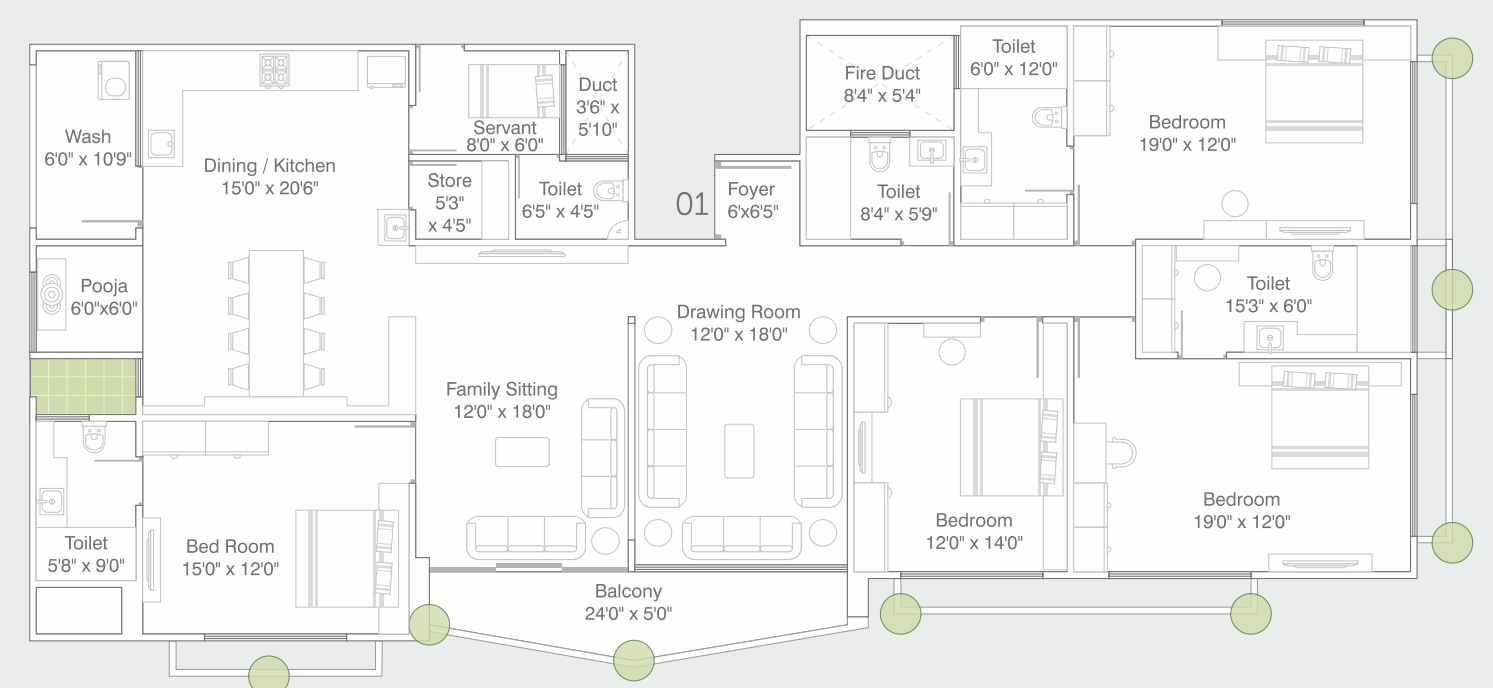
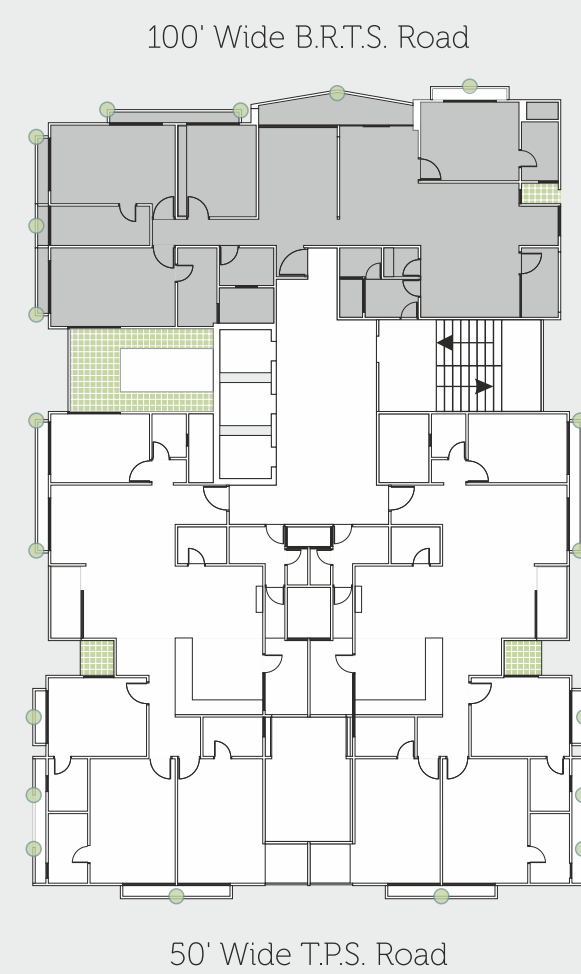
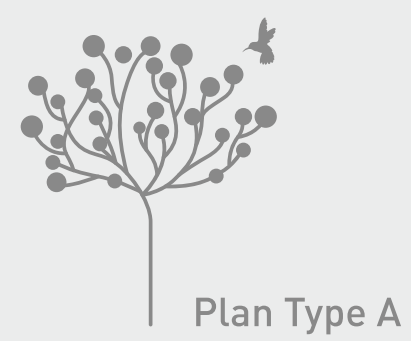


First Floor



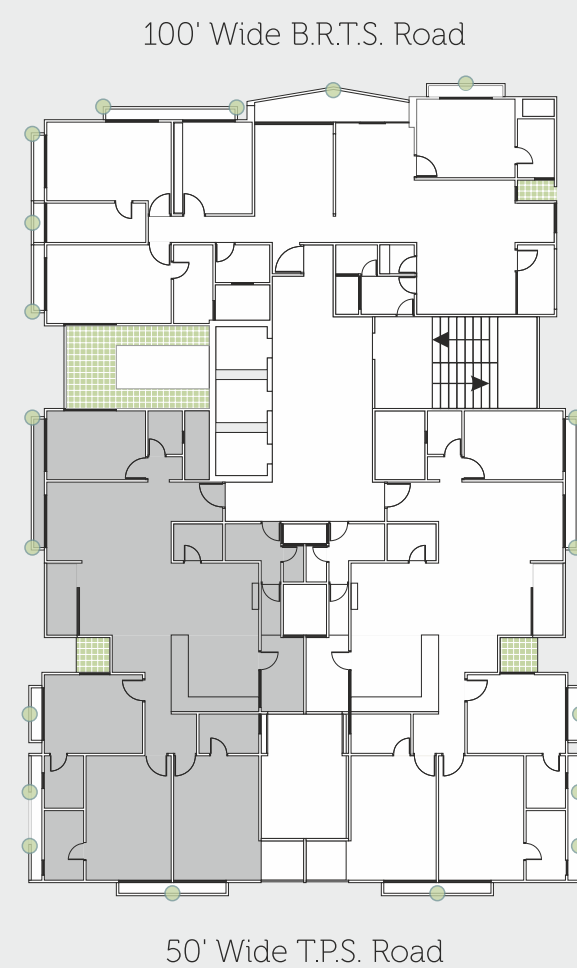
Typical Floor (2 TO 12)







Plan Type B

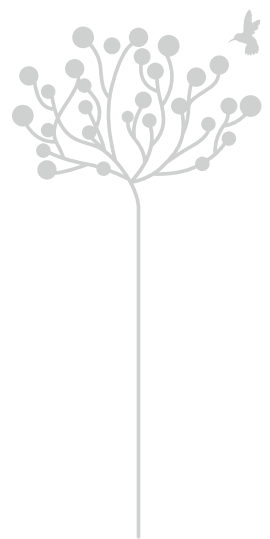






Wake up to the picture perfect view,
One that hangs right outside your window.

Balconies are accessed through sliding glass doors giving you splendid views of green surroundings hence every apartment has imposing views.



To enjoy the limitlessness of the sky,
just open your window.

The living areas stream with natural light and afford superb skyline views,
thanks to the generously proportioned windows and balcony doors.



Master Bedroom With Private Balcony

Rear Side Road View



Indulge in
your private
domain

Get ready to retreat
into your smartly designed bedroom
with private balcony that exudes relaxed elegance,
striking a harmonious balance between
the contemporary and the comfortable.



A place that makes way to your heart.

Not just a cooking place, but the heart of your home, The kitchen at Manor Greenz, equipped with ample storage spaces, is thoughtfully designed for functionality and optimal ventilation to enable a wholesome & happy lifestyle.



Beautifully designed,
accessorized by
stunning views

As you step into your residence, you enter
the world of privilege. Your spacious
airconditioned home provides spectacular
views from living room through the balcony.

Savour the spaciousness while you
indulge in conversation.





Gym



Give
your health,
a world of
fitness

Stroll into the health zone facing the garden or
meditate on the Yoga Deck. Life here ensures health
and happiness for you.



The
Manor Greenz
Experience

The privileged living experience

FLOORING

- Drawing, Living & Dining : Italian Marble
- Two Master Bed rooms : Wooden Flooring
- Other Bedrooms : Composite Italian Marble
- Kitchen
- Flooring : Italian Marble
- Platform : Imported Granite with dedo 4' Ceramic Tiles
- Store Room
- Shelf : DP Kota Stone with ceramic dedo
- Floor : Vitrified Tiles
- Wash area
- Floor : Kota Stone
- Dedo : Vitrified Tiles
- Shelf : DP Kota Stone for Extra Storage

BALCONY

Rustic Tiles

WINDOWS

Premium quality wooden U.P.V.C. sliding windows with stone revile and double glazed for noise control with 5 mm toughened glass.

DOORS

Main Door : One side veneer with auto lock.
Other Doors : Flush Door (32 mm) with SS matt finish handle locks.

TOILETS

- Glazed / Vitrified tiles up to lintel level.
- Granite / composite Marble Counter basin.
- EWC - Wall hung type - Duravit, American Standard or equivalent.
- CP Brass fitting - Kohler or equivalent.
- Shower Panel with Glass cubicle in two master bedrooms.

ELECTRIFICATION

Three phase concealed ISI copper wiring with modular switches and M.C.B. distribution panel.

SECURITY

Smart screen security system with video phones of honeywell or equivalent in each flat with CCTV in common areas.

AIR CONDITION

- Centrally air conditioned system in each apartment.

INTERNAL & EXTERNAL WALLS

- Internal walls Single coat mala plaster with putty finish.
- External walls sand faced plaster with Apex / Texture paint.

Salient Features

- 3 car parking per apartment (2 in basement & 1 in ground floor).
- Double basement with mechanical car park.
- Fully Air Conditioned apartment.
- Three Automatic Elevator of schindler or equivalent.
- Pressure water system.
- Well designed centrally A/C waiting lounge.
- Fully furnished gymnasium with morden equipments.
- 24 X 7 Security with CCTV in entire premises.
- Optimum use of natural lights in all rooms.

Special Notes

- Developers reserve the right to change or revise or make any modifications, additions, omissions, or alterations in the scheme as a whole or any part thereof or any details therein, at their sole discretion without prior notice.
- Such changes would be binding to all the members.
- All the architectural and interior views in brochure are computer graphics simulated interpretation of the actual property.
- All the dimensions given are approximate & from unfinished surfaces.
- This brochure is just for an easy presentation of the project and should not be treated as a legal document.
- Stamp duty, registration charges, legal documentation charges, fix maintenance charges, AMC charges, Torrent Power charges including cable and sub-station cost shall be borne by the purchaser.
- Service Tax, VAT and any additional charges, Taxes Cess or Duties levied by Govt. / Semi Govt. and Local Authorities Prior during or after completion of the scheme will be borne by the purchaser.



headed by Mr. Mahesh Sanghavi and

Mr. Siddhartha Sanghavi (B.E.) with



and



are envisioning a prestine project



The group has nearly three decades of experience and a track-record of developing innovative projects emphasizing on contemporary architecture, strong project execution and quality construction. With over 100 projects developed across Jamnagar and Ahmedabad, WINSOME REALTY truly has a legacy of moulding countless smiles.



Good living space, prime location in combination with supreme amenities is a rare find, MANOR GREENZ is such a rare combination.

MANOR GREENZ is a statement of supremacy, an address that will make its residents proud and we aim to provide spaces which are efficient & competent.

Efficient in terms of utilization of space. We ensure that each square feet of the space we provide has the ability to add to the utility of the product.

Competent in terms of design & innovation.

Site Address :



LAVISH 4 BEDS & PENTHOUSES

Nr. Ellisridge Gymkhana Club,
Law Garden, Ahmedabad - 380006.

Contact :

95865 00099 / 98242 14452 / 98252 12195

Web : www.manorgreenz.com

Email : sales@manorgreenz.com

Developers :

ASHTAVINAYAK CORPORATION

A Project By :



Architect :

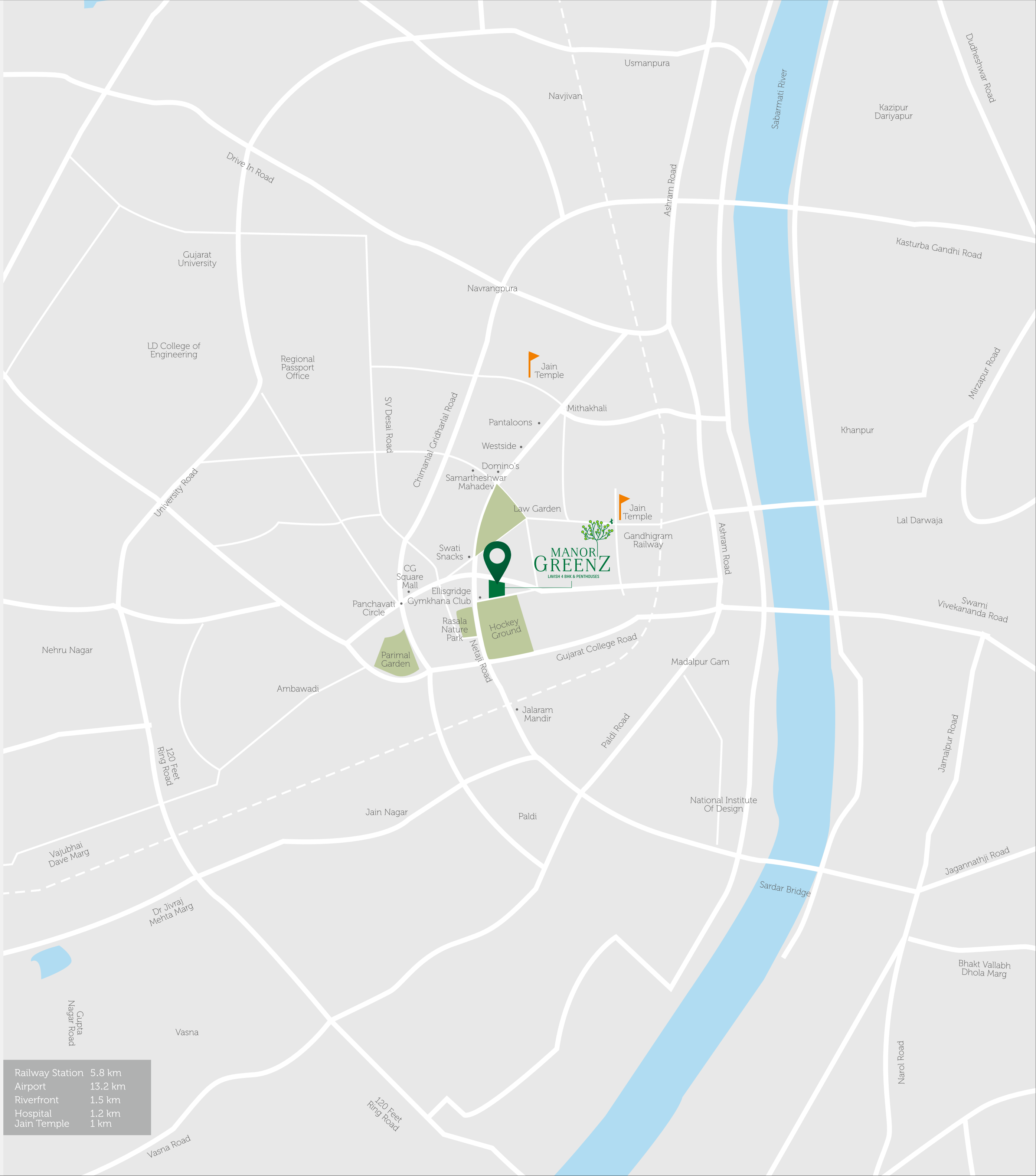


Ahmedabad

Structural Engineer :

Bhoomi Consultants

designed & printed by :
KALAVID - 98242 21002



a project by



WINSOME
REALTY
SHAPING LIFESTYLE

95865 00099 / 98242 14452 / 98252 12195